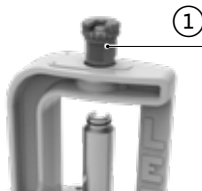
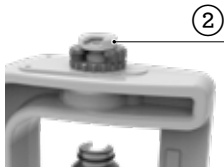


PA4467



BREECH LOCK RAM PRIME

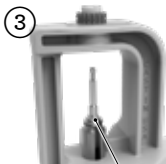
Primer Guide
assembliesSmall
92029Large
92023BREECH LOCK SHELL
HOLDER ADAPTER① Install breech lock shell
holder adapter into
your press.② Slide
universal
press shell
holder (sold
separately) into the
shell holder adapter of
the tool.**LEE**

BREECH LOCK RAM PRIME

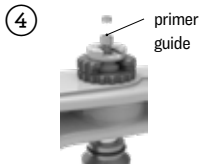
LEE PRECISION, INC.

4275 COUNTY ROAD U • HARTFORD WI 53027

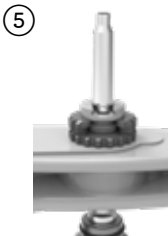
www.leeprecision.com



Install appropriate size primer guide assembly into ram.



With the ram raised, place a primer into the primer guide.



APP Press:
Lower handle until you feel the primer seat.

Breech Lock Press:
Raise the ram until you feel the primer seat.

Verify primer is flush or slightly below flush into the case head.

WARNING

• Primer dust accumulation can detonate. Regularly clean parts to prevent accumulation. The dust contains lead; a substance known to cause birth defects, reproductive harm and other serious physical injury. Wash hands after exposure.



WARNING Handling primers will expose you and others in the area to lead, which is known to the State of California to cause reproductive harm and cancer. For more information, www.P65Warnings.ca.gov.

CAUTION

- Priming should not be attempted by persons not willing and able to read and follow instructions exactly.
- Do not permit distractions while priming.
- Children should not be permitted to prime without strict parental supervision.
- Always wear safety glasses and hearing protection when priming and shooting.
- Primers and gun powder, like gasoline and matches, can be dangerous if improperly handled or misused.
- Primers will explode if shocked or crushed.

LEE
LEE PRECISION, INC.

LEE PRECISION, INC.
4275 COUNTY ROAD U • HARTFORD WI 53027
www.leeprecision.com